

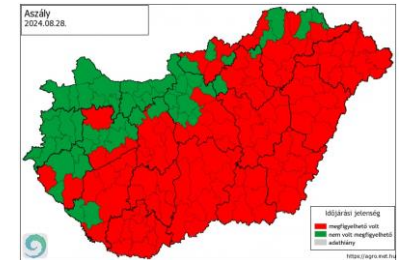
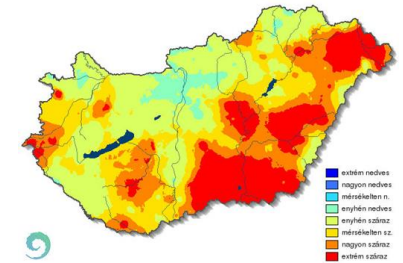
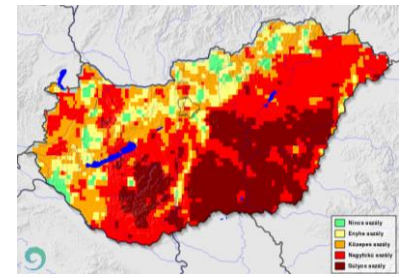
Drought monitoring at the HungaroMet

- Three types of drought information

- Agricultural drought on the base of soil moisture
 - Per days between March and September
- SPI
 - Per seasons
- Agricultural Risk Assessment System
 - Per days

- Data sources

- Gridded daily and monthly data from station measurements (precipitation, temperature, and relative humidity)
- Calculated soil moisture based on the gridded meteorological data



Cooperations and projects

- Recently we don't have any cooperation with other institutions in Hungary
- Recently we don't have any drought-related projects